



LONDON METaverse 1.0

School Trip in **VIRTUAL REALITY** in English

LONDON METAVERSE 1.0

3 hours
daily

IMMERSIVE CLIL EXPERIENCES

*streamings - virtual reality 360 - augmented reality
gamification - storytelling - microlearning*

1 hour
daily

Creative English Course

writing blog - speaking videoblog

1 hour
daily

Workshops in English

physical and artistic British activities

1 hour
daily

Evenings in English

cinema - games - entertainment

2 hours
daily

Optional Adventures

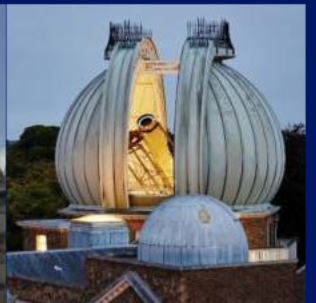
(to replace the creative English course and workshops)

trekking - horsing - golf - nautical activities



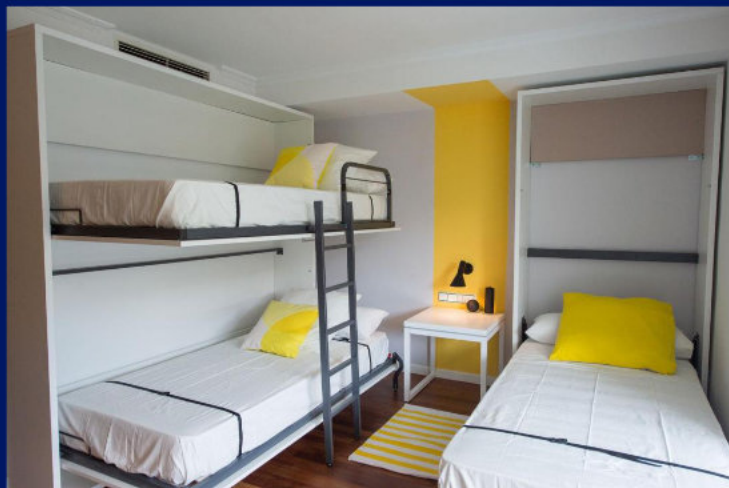
IMMERSIVE CLIL EXPERIENCES

*Westminster - City of London - Bankside - Kensington
Greenwich - Museums - Shopping in West End - Photoshoot*





5-days stage in HOTEL SPORTS NÁYADE***

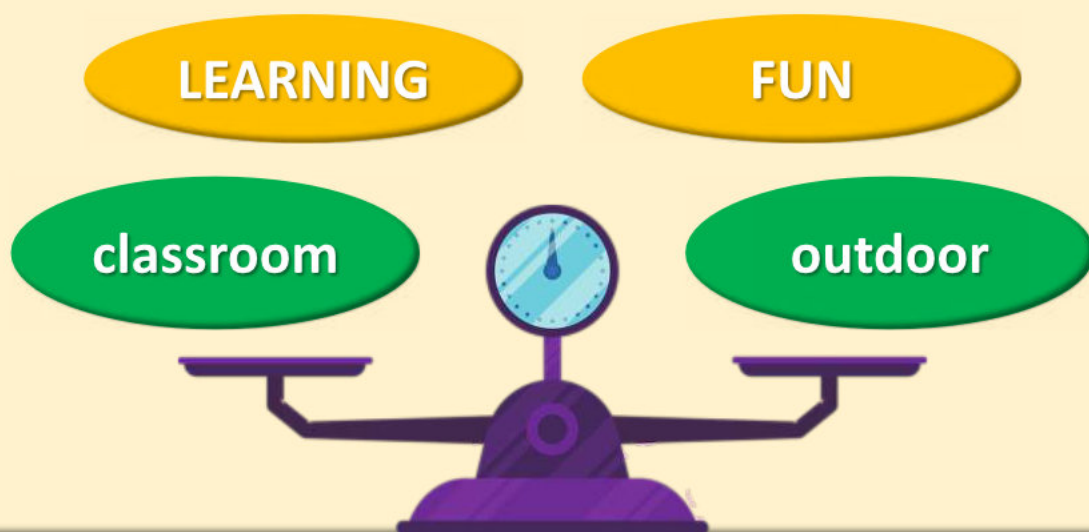




Sierra de Guadarrama National Park - excellent facilities and environment



Practical information



490€ per 5-days stage per student

including accommodation full board + immersive VR CLIL experiences + VR devices + Creative English Course + Workshops + staff full time + insurances

+ 69€ optional adventures *per stage per student*
+ Transport on request



Exclusive Booking

911 594 009

932 52 12 70

943 667 051

info@denatravel.com